

PHOTOMETRIC TEST REPORT

DECOR PRO ROUND
ADJUSTABLE - TEXTURED WHITE
- 4002755

astro

DECOR PRO ROUND ADJUSTABLE -

astro

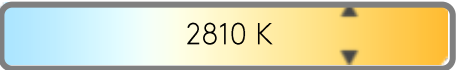
LIGHT EFFICIENCY:



LIGHT QUALITY:



COLOR TEMPERATURE:



OUTPUT: 1205 lm

PEAK: 4715 cd

POWER: 11.8 W

PF: 0.95



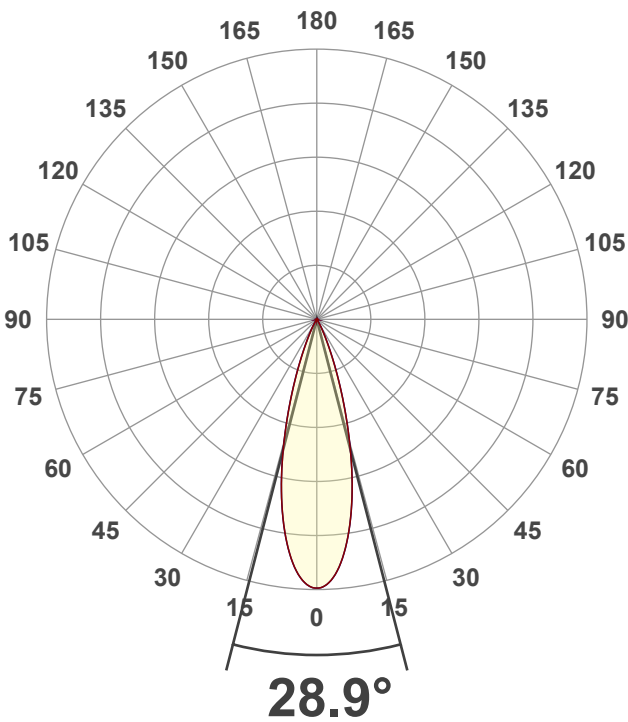
Tracking number: [n/a](#)

Product name:
Decor Pro Round Adjustable - Textured
White - 4002755

Item number:
DRA-TW-HE27G1-30G1-X-D1

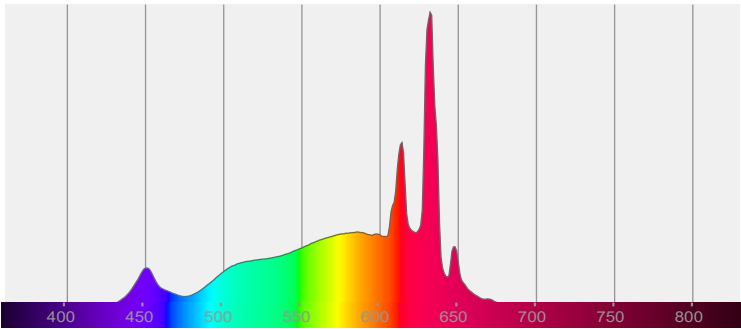
Date and time:
19/12/2024 14:53:25

Description:
IP20 LED Downlight

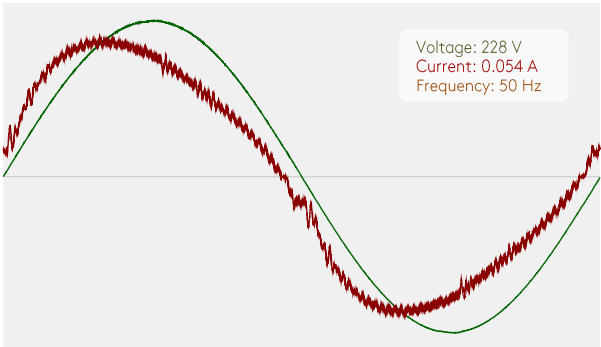


CIE 1931
x: 0.452
y: 0.411

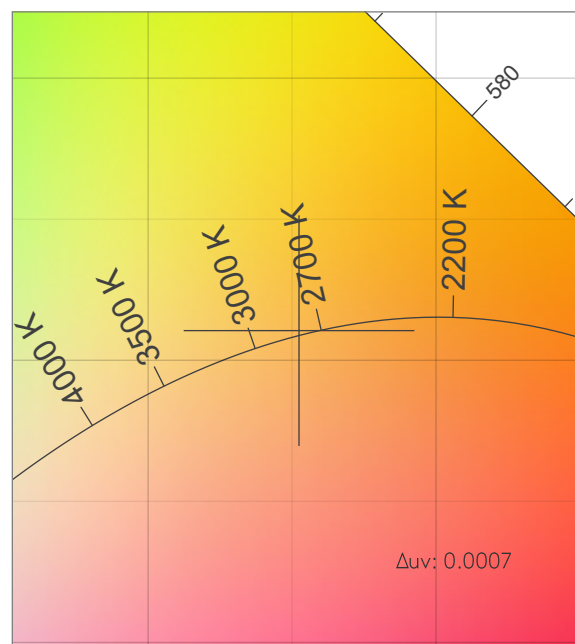
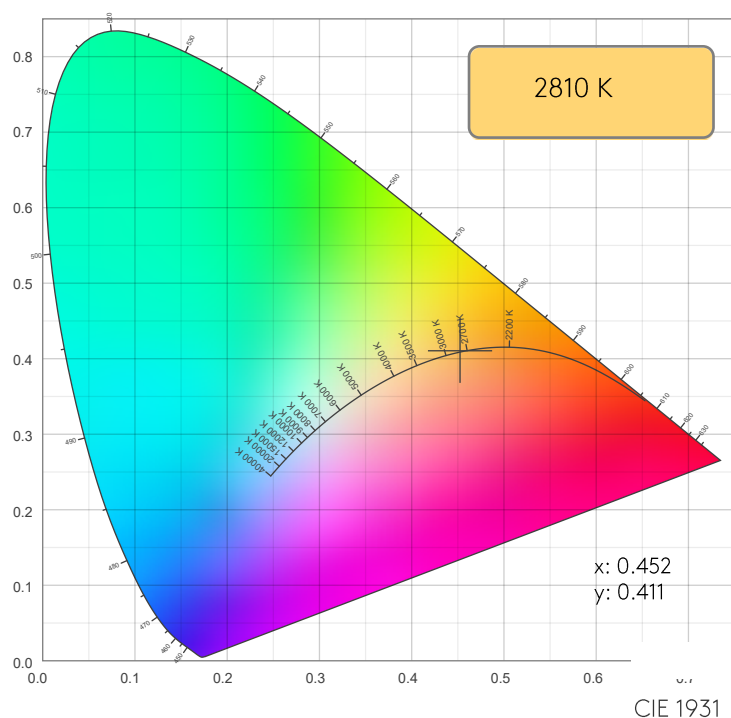
SPECTRA



POWER

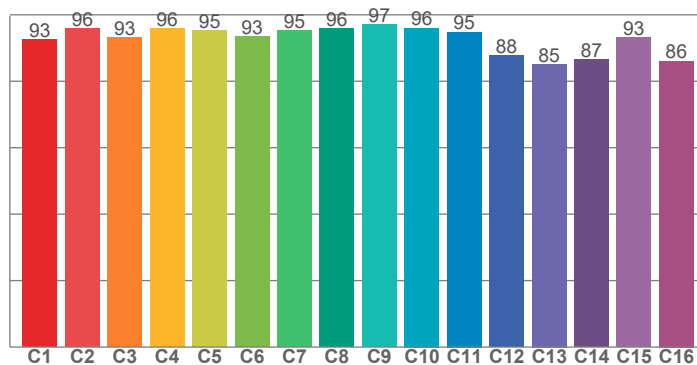


COLOR DETAILS

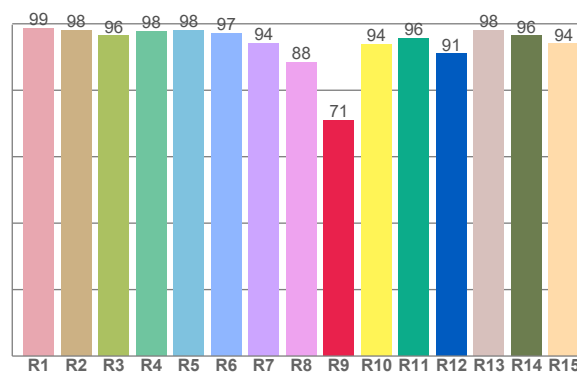


CIE 1931 ZOOM

TM30: 93.1



CRI: 96.0 (R1-R8)



CRI R values, only R1-R8 are used to calculate final CRI value

R1	R2	R3	R4	R5	R6	R7	R8	R9	R10	R11	R12	R13	R14	R15
98.5	98.1	96.4	97.7	98.1	97.0	94.2	88.3	71.0	93.7	95.7	90.9	98.0	96.4	94.0

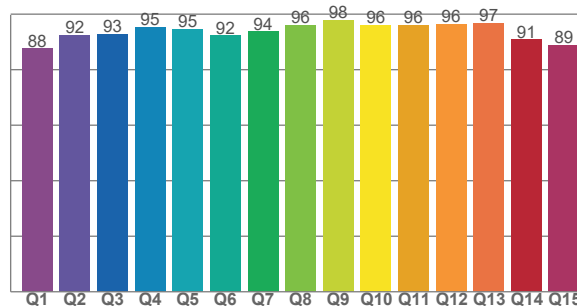
TM30 C values, 16 binned values out of total of 99 C values

C1	C2	C3	C4	C5	C6	C7	C8	C9	C10	C11	C12	C13	C14	C15	C16
92.5	95.8	93.1	95.9	95.2	93.4	95.2	95.8	97.1	96.0	94.8	87.6	85.2	86.6	93.2	86.1

CQS Q values

Q1	Q2	Q3	Q4	Q5	Q6	Q7	Q8	Q9	Q10	Q11	Q12	Q13	Q14	Q15
87.7	92.4	92.9	95.3	94.7	92.3	93.7	96.1	97.8	96.0	96.2	96.4	96.7	90.9	89.0

CQS: 93.0



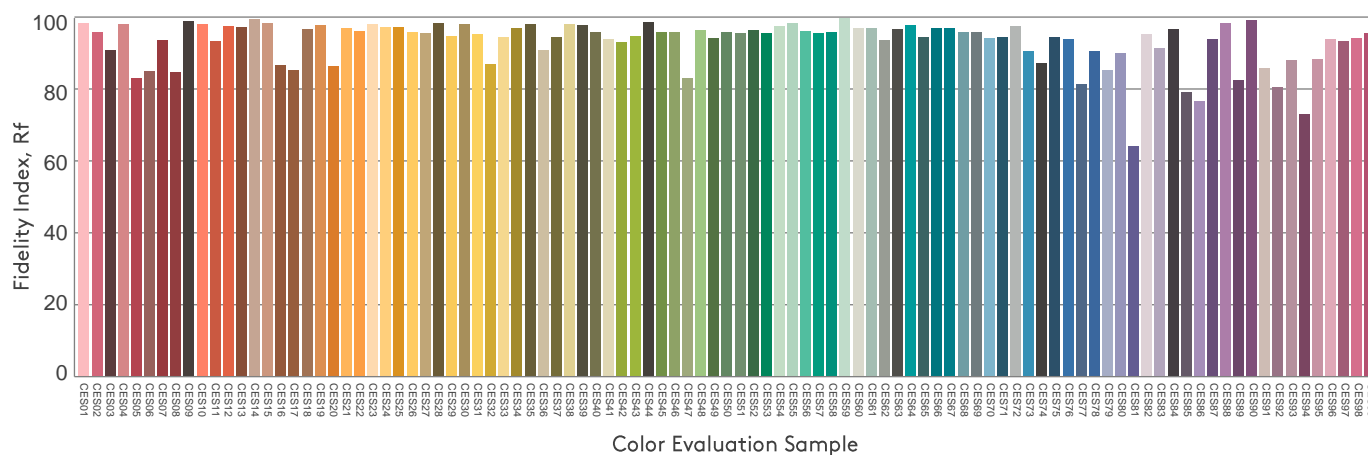
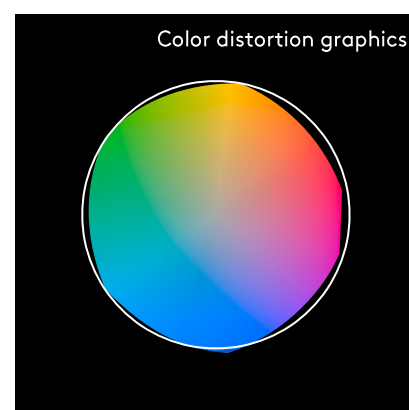
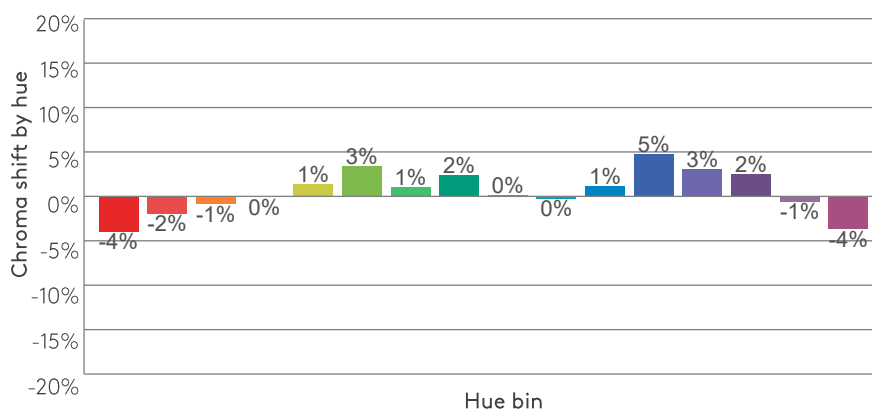
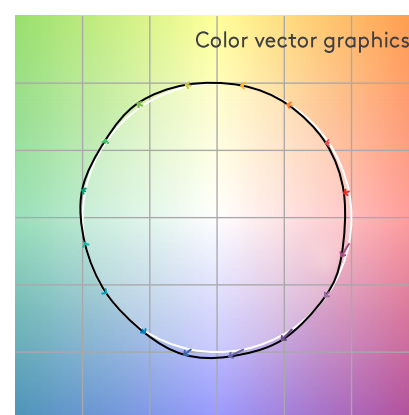
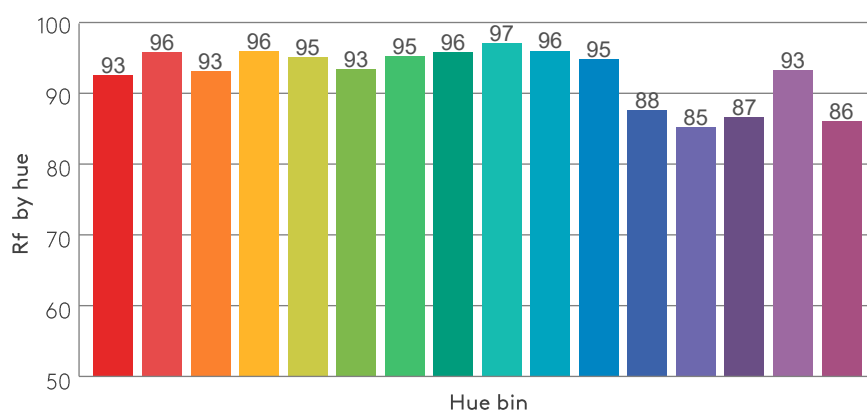
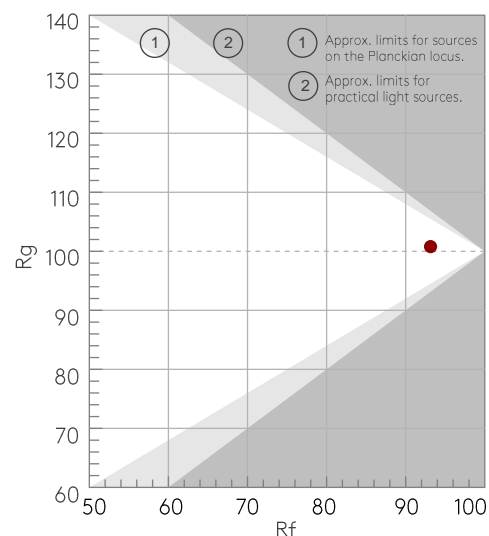
COLOR PARAMETERS

Color temperature	Color rendering index	Red component	Color fidelity	Color gamut	Color quality scale	Color coordinate cie 1931	Color coordinate cie 1931	Color coordinate	Color coordinate	Color deviation from black body
CCT	CRI	CRI R9	TM30 Rf	TM30 Rg	CQS	x	y	u	v	Δuv
2810 K	96.0	71.0	93.1	100.8	93.0	0.452	0.411	0.258	0.351	0.0007

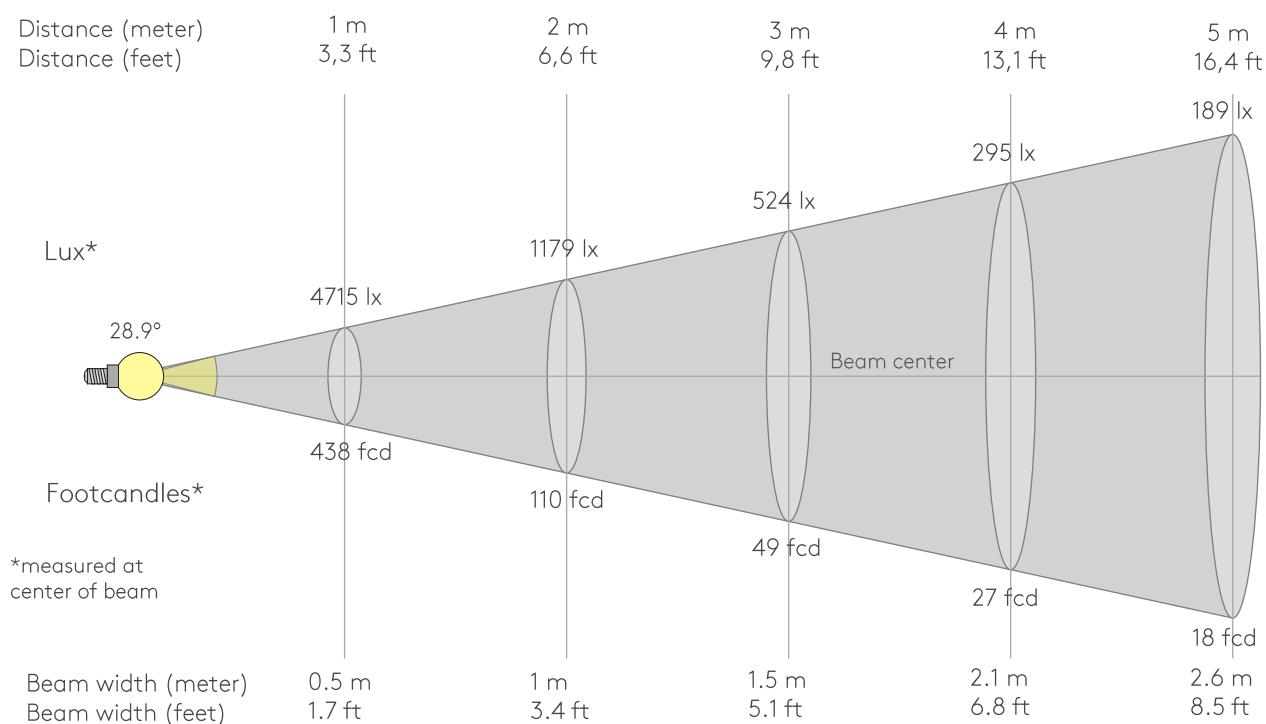
Rf 93.1
Fidelity index Rf

Rg 100.8
Gammut index Rg

Hue Bin	R _f	Graphic shifts (%)	
		Chroma	Hue
1	93	-4%	-1%
2	96	-2%	1%
3	93	-1%	3%
4	96	0%	1%
5	95	1%	4%
6	93	3%	2%
7	95	1%	-2%
8	96	2%	-1%
9	97	0%	-1%
10	96	0%	1%
11	95	1%	3%
12	88	5%	-4%
13	85	3%	-11%
14	87	2%	-10%
15	93	-1%	-4%
16	86	-4%	-10%



BEAM DETAILS



Beam intensities from 1-20m

1m	2m	3m	4m	5m	6m	7m	8m	9m	10m	11m	12m	13m	14m	15m	16m	17m	18m	19m	20m
3.3ft	6.6ft	9.8ft	13.1ft	16.4ft	19.7ft	23ft	26.2ft	29.5ft	32.8ft	36.1ft	39.4ft	42.7ft	45.9ft	49.2ft	52.5ft	55.8ft	59.1ft	62.3ft	65.6ft
4715lx	1179lx	524lx	295lx	189lx	131lx	96lx	74lx	58lx	47lx	39lx	33lx	28lx	24lx	21lx	18lx	16lx	15lx	13lx	12lx
438fcd	109.5fcd	48.7fcd	27.4fcd	17.5fcd	12.2fcd	8.9fcd	6.8fcd	5.4fcd	4.4fcd	3.6fcd	3fcd	2.6fcd	2.2fcd	1.9fcd	1.7fcd	1.5fcd	1.4fcd	1.2fcd	1.1fcd

Intensities in 0° c-plane

0°	2°	4°	6°	8°	10°	12°	14°	16°	18°	20°	22°	24°	26°	28°	30°	32°	34°	36°	38°
4715	4663	4502	4236	3882	3459	2985	2477	1968	1493	1078	739	481	303	184	106	52	21	10	7
100%	99%	95%	90%	82%	73%	63%	53%	42%	32%	23%	16%	10%	6%	4%	2%	1%	0%	0%	0%

Intensities in 90° c-plane

0°	2°	4°	6°	8°	10°	12°	14°	16°	18°	20°	22°	24°	26°	28°	30°	32°	34°	36°	38°
4715	4663	4502	4236	3882	3459	2985	2477	1968	1493	1078	739	481	303	184	106	52	21	10	7
100%	99%	95%	90%	82%	73%	63%	53%	42%	32%	23%	16%	10%	6%	4%	2%	1%	0%	0%	0%

Intensities in 180° c-plane

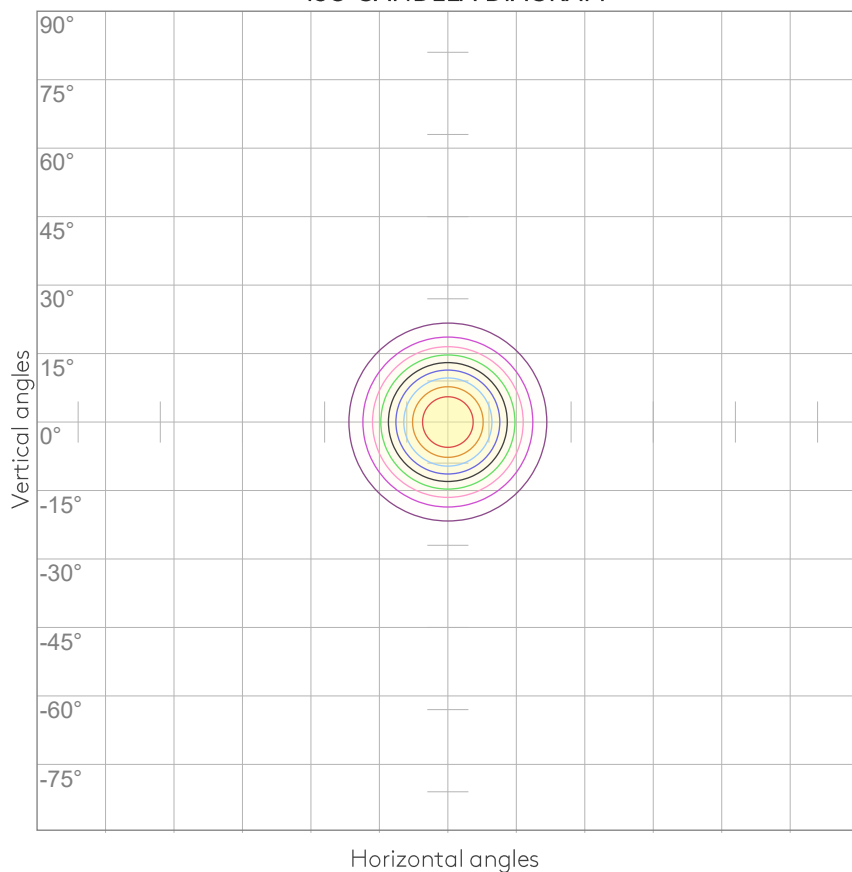
0°	2°	4°	6°	8°	10°	12°	14°	16°	18°	20°	22°	24°	26°	28°	30°	32°	34°	36°	38°
4715	4663	4502	4236	3882	3459	2985	2477	1968	1493	1078	739	481	303	184	106	52	21	10	7
100%	99%	95%	90%	82%	73%	63%	53%	42%	32%	23%	16%	10%	6%	4%	2%	1%	0%	0%	0%

Intensities in 270° c-plane

0°	2°	4°	6°	8°	10°	12°	14°	16°	18°	20°	22°	24°	26°	28°	30°	32°	34°	36°	38°
4715	4663	4502	4236	3882	3459	2985	2477	1968	1493	1078	739	481	303	184	106	52	21	10	7
100%	99%	95%	90%	82%	73%	63%	53%	42%	32%	23%	16%	10%	6%	4%	2%	1%	0%	0%	0%

Beam angle 50%	Field angle 10%	Cutoff angle 2,5%	Intensity ratio in 120° cone	Intensity ratio in 90° cone
28.9°	48.2°	59.3°	99.7%	99.5%

ISO CANDELA DIAGRAM



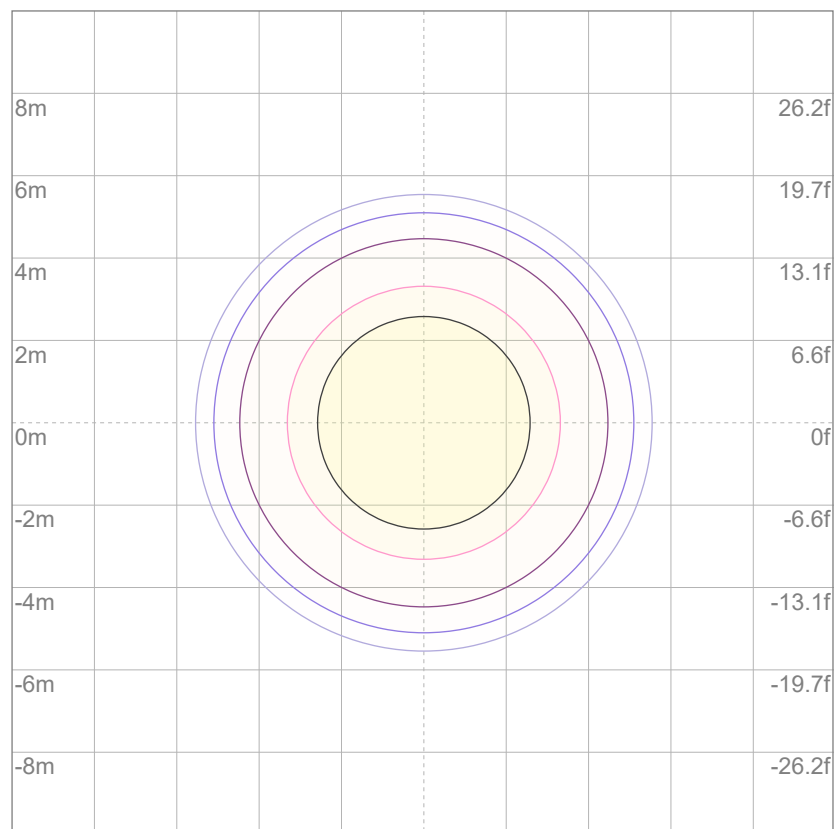
10%	471 cd
20%	943 cd
30%	1414 cd
40%	1886 cd
50%	2357 cd
60%	2829 cd
70%	3300 cd
80%	3772 cd
90%	4243 cd

Conditions:

Number of c-planes: 8

Candela at center: 4715 cd

ISO LUX DIAGRAM



Mounting height: 10 meters (33 feet)

3%	1.41 lx
5%	2.36 lx
10%	4.71 lx
30%	14.1 lx
50%	{LUX_10M50} lx

Conditions:

Number of c-planes: 8

Lux at center: 47.1 lx

Lux distribution on a surface
when lamp is mounted at 10
meters from the surface.

UGR

GLARE EVALUATION ACCORDING TO UGR

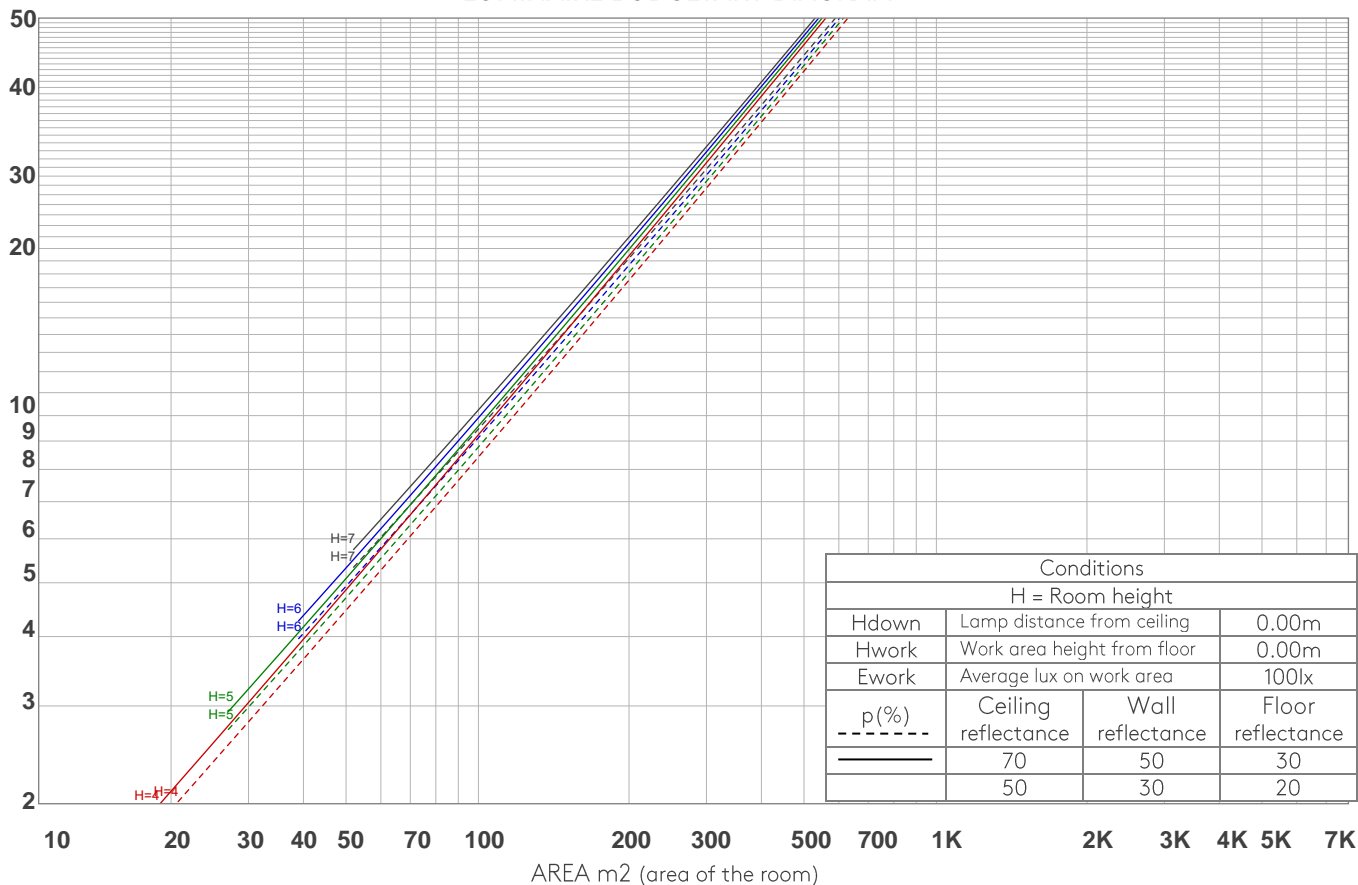
p Ceiling		70	70	50	50	30	70	70	50	50	30
p Walls		50	30	50	30	30	50	30	50	30	30
p Floor		20	20	20	20	20	20	20	20	20	20
Room size X Y		Viewing direction at right angles to lamp axis					Viewing direction parallel to lamp axis				
2H	2H	5.4	5.7	5.4	5.9	6.1	5.4	5.7	5.4	5.9	6.1
	3H	5.0	5.6	5.4	5.8	6.0	5.0	5.6	5.4	5.8	6.0
	4H	5.0	5.5	5.4	5.7	6.0	5.0	5.5	5.4	5.7	6.0
	6H	5.0	5.4	5.3	5.7	6.1	5.0	5.4	5.3	5.7	6.1
	8H	5.0	5.4	5.3	5.7	6.1	5.0	5.4	5.3	5.7	6.1
	12H	5.0	5.4	5.3	5.7	6.2	5.0	5.4	5.3	5.7	6.2
4H	2H	5.0	5.5	5.4	5.8	6.0	5.0	5.5	5.4	5.8	6.0
	3H	4.9	5.3	5.2	5.7	6.1	4.9	5.3	5.2	5.7	6.1
	4H	4.8	5.2	5.2	5.6	6.1	4.8	5.2	5.2	5.6	6.1
	6H	4.7	5.2	5.2	5.5	5.8	4.7	5.2	5.2	5.5	5.8
	8H	4.7	5.1	5.2	5.5	5.8	4.7	5.1	5.2	5.5	5.8
	12H	4.8	5.1	5.3	5.5	5.9	4.8	5.1	5.3	5.5	5.9
8H	4H	4.6	5.1	5.2	5.4	5.8	4.6	5.1	5.2	5.4	5.8
	6H	4.6	4.9	5.1	5.3	5.9	4.6	4.9	5.1	5.3	5.9
	8H	4.7	4.9	5.2	5.4	6.0	4.7	4.9	5.2	5.4	6.0
	12H	4.8	5.0	5.4	5.5	6.1	4.8	5.0	5.4	5.5	6.1
12H	4H	4.6	4.9	5.1	5.3	5.8	4.6	4.9	5.1	5.3	5.8
	6H	4.6	4.8	5.2	5.4	6.0	4.6	4.8	5.2	5.4	6.0
	8H	4.7	4.8	5.3	5.4	6.0	4.7	4.8	5.3	5.4	6.0
Variation of the observer position for the luminaire distance S											
S = 1.0H		6.1 / -5.0					6.1 / -5.0				
S = 1.5H		8.8 / -5.9					8.8 / -5.9				
S = 2.0H		10.7 / -6.6					10.7 / -6.6				
Standard table		n/a					n/a				
Correction summand		n/a					n/a				
Corrected glare indices referring to 1205 lm total luminous flux											

COEFFICIENTS OF UTILIZATION

Ceiling reflectance	80				70				50			30			10			0
Wall reflectance	70	50	30	10	70	50	30	10	50	30	10	50	30	10	50	30	10	0
Floor reflectance	20	20	20	20	20	20	20	20	20	20	20	20	20	20	20	20	20	0
RCR	(RCR: Room Cavity Ratio) Room Values are expressed as percentage of Lumens delivered to the task surface																	
0	119	119	119	119	116	116	116	116	111	111	111	106	106	106	102	102	102	100
1	115	113	111	109	113	111	109	108	107	105	104	103	102	101	100	99	98	96
2	111	108	105	102	109	106	103	101	103	101	99	100	98	97	97	96	95	93
3	108	103	100	97	106	102	99	96	99	97	95	97	95	93	95	93	92	90
4	105	99	95	92	103	98	95	92	96	93	91	94	92	90	93	90	89	88
5	101	96	92	89	100	95	91	88	93	90	87	92	89	87	90	88	86	85
6	99	92	88	85	97	92	88	85	90	87	84	89	86	84	88	85	83	82
7	96	89	85	82	95	89	85	82	88	84	82	87	84	81	86	83	81	80
8	93	87	83	80	92	86	82	80	85	82	79	84	81	79	83	81	79	78
9	91	84	80	77	90	84	80	77	83	79	77	82	79	77	81	79	76	76
10	88	82	78	75	88	81	78	75	81	77	75	80	77	75	79	77	74	74

LAMPS (number of lamps)

LUMINAIRE BUDGETARY DIAGRAM



ZONAL LUMEN SUMMARY

0°-10°	10°-20°	20°-30°	30°-40°	40°-50°	50°-60°	60°-70°	70°-80°	80°-90°
389 lm	596 lm	196 lm	16.4 lm	2.56 lm	1.25 lm	0.382 lm	0.168 lm	0.202 lm
90°-100°	100°-110°	110°-120°	120°-130°	130°-140°	140°-150°	150°-160°	160°-170°	170°-180°
0.162 lm	0.155 lm	0.129 lm	0.157 lm	0.241 lm	0.473 lm	0.660 lm	0.472 lm	0.110 lm

FLICKER

FLICKER CURVE (COMPLETE SAMPLED)



FLICKER FRAME (FRAME OF ONE FLICKER



FLICKER FFT (FREQUENCY SCOPE OF FLICKER



FLICKER RESULTS:

Flicker frequency:	n/a Hz
Flicker index:	n/a
Flicker percentage:	n/a %
SVM: (Visual flicker)	n/a

FLICKER CONDITIONS:

Sample rate:	n/a samples/second
--------------	--------------------